

# UNIVERSAL DUCT SEALING SYSTEMS



100mm Openings  
Fits (99–103mm)



125mm Openings  
Fits (124–128mm)



**ACCABLE**  
SOLUTIONS



150mm Openings  
Fits (149–153mm)



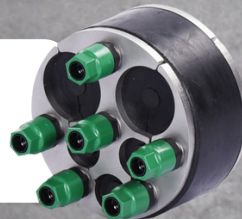
200mm Openings  
Fits (198–203mm)

**KRASO**  
EINFACH + DICHT

Design 1  
4 x (6 to 33mm)



Design 2  
3 x (6 to 18mm), &  
2 x (6 to 33mm)



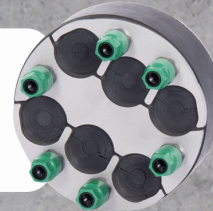
Design 3  
8 x (6 to 18mm)



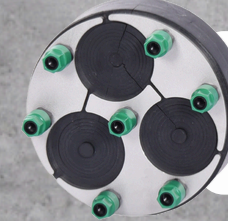
Design 4  
1 x (18 to 65mm)  
Single Cable/Pipe



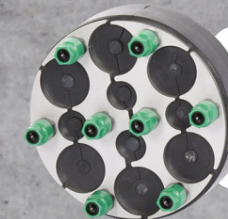
Design 1  
6 x (6 to 28mm)



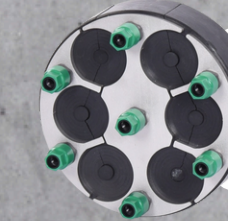
Design 1  
3 x (6 to 52mm)  
TREFOIL



Design 2  
4 x (6 to 18mm), &  
6 x (6 to 33mm)



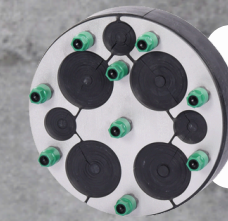
Design 3  
6 x (6 to 38mm)



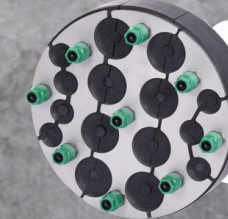
Design 4  
1 x (12 to 75mm)



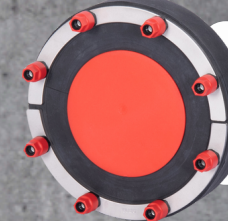
Design 1  
3 x (6 to 28mm), &  
4 x (6 to 52mm)



Design 2  
7 x (6 to 18mm), &  
8 x (6 to 33mm)



Design 3  
1 x (110 to 160mm)  
single cable/pipe



**CUSTOMISED  
VERSIONS  
AVAILABLE**



Torque Rated Nut  
Technology (No  
Torque Wrench  
Required)

2.5 Bar Pressure  
Resistant

Perfect For  
Running Water  
Applications

Chlorine Resistant

40mm Thick  
Specialised  
Rubber

Methane Resistant

Stainless Steel  
Non-Corrosive  
Plates

Radon Resistant

Hydrogen  
Sulphide  
Resistant

Split Design  
For Retrofit  
Installations

Peelable Cable  
Entries For  
Different Sized  
Cables